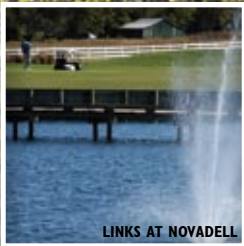
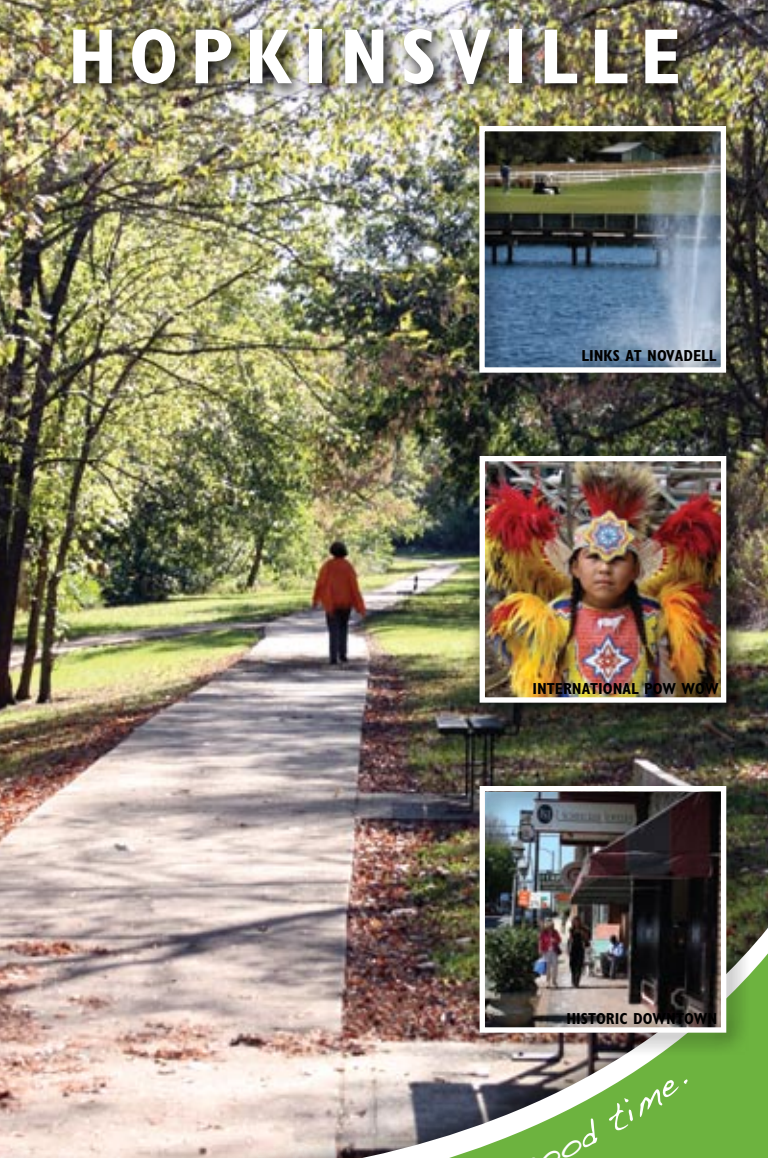


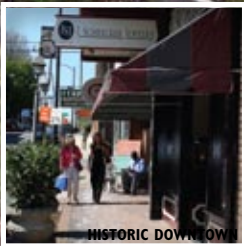
HOPKINSVILLE



LINKS AT NOVADELL



INTERNATIONAL POW WOW



HISTORIC DOWNTOWN

LITTLE RIVER PARK TRAIL

We know the value of a good time.



HOPKINSVILLE
CHRISTIAN COUNTY
CONVENTION & VISITOR'S BUREAU

Make your mark.



Links at Novadell

Pennyroyal Blue Springs Scuba

HOPKINSVILLE

Christian County, Kentucky *Tie Breaker Family Aquatic Center*

YOUR HAVEN FOR OUTDOOR ADVENTURE.

With plenty to do indoors as well.

From rural rolling farmland adored by bikers, to steep terrain with expansive vistas enjoyed by hikers, to golf, parks and water sports, outdoor enthusiasts can always find something to do in Christian County. If a museum, community theatre or antique shopping sound more intriguing to you, we have plenty of indoor entertainment options, too. Explore it all in Hopkinsville, where we know the value of a good time.

- 3 **Recreation**
- 5 **Historic Places**
- 10 **Arts & Entertainment**
- 11 **Fun on the Farm**
- 13 **Odds & Ends**
- 13 **Shopping & Dining**
- 14 **In the Region**
- 16 **Meetings & Conventions**
- 18 **Calendar of Events**
- 22 **Lodging & Attractions Map**



Attractions and events located within the downtown historic district are denoted with a Town Clock icon.

Golf

With five public courses in the immediate vicinity, 30 courses in a 50-mile radius, and a mild year-round climate, Hopkinsville is a golfer's dream. From dramatic elevation changes to gentle rolling fairways, we have the vistas and the variety of challenges for you. Year-round golf packages are available at area hotels. Visit www.golfhopkinsville.com to see course maps or call 1-800-842-9959 for details.

The Links at Novadell
 500 Novadell Way (off Hwy. 41-A)
 270-886-1101
 18 holes / Par 72 / 6,886 yards

Western Hills
 2160 Russellville Road
 270-885-6023
 18 holes / Par 72 / 6,907 yards

Pennyrile Forest State Park
 20781 Pennyrile Lodge Road
 Dawson Springs, KY
 866-427-7888
 18 holes / Par 72 / 7,129 yards

Cole Park
 1601 Lee Road, Ft. Campbell, KY (on post)
 270-798-4906
 18 holes / Par 72 / 7,129 yards

Pennyroyal Scuba Blue Springs Resort

602 Christian Quarry Rd. / 270-887-2585 / www.pennyroyalscuba.com

With water ranging from 5 to 130 feet depths, Pennyroyal Scuba offers a full-range of diving experiences from beginner to advanced.

Pennyrile Forest State Resort Park

20781 Pennyrile Lodge Rd., Dawson Springs / 800-325-1711
<http://parks.ky.gov/findparks/resortparks/pf>

Surrounded by the beautiful woods of western Kentucky on the serene Pennyrile Lake, this state resort park features a rustic wood and stone lodge, rental cottages, camping, restaurant, golf course, meeting rooms, nature trails, fishing, boating, mountain biking, swimming, tennis and picnic shelters.

Walking & Biking Trails



Throughout Hopkinsville

Visit www.visithopkinsville.com for trail maps and links to club information.



Tie Breaker Family Aquatic Center



Land Between the Lakes



Trail of Tears Commemorative Park



Woody Winfree Fire-Transportation Museum

Tie Breaker Family Aquatic Center

9503 Eagle Way Bypass, Hopkinsville / 270-890-0730 / www.tiebreakerpark.com

Tie Breaker Family Aquatic Center features a twisting tube, lazy river, and splash interactive playground with pool side concessions on site. The Center is open daily from Memorial Day through the start of school, and weekends until Labor Day.

Disc Golf

2600 Thomas Street (North Drive Complex), Hopkinsville / 270-887-4290

Designed by HB Clark Signature Disc Golf Course Designs, Hopkinsville's first disc golf course opened in 2008. The 9-hole course is sloped, with trees, a creek, a pond, and tall grass areas, providing players with a variety of distances and challenges.

Hunting & Fishing

Lake Morris, Lake Blythe and nearby Land Between the Lakes National Recreation Area provide some of the region's best hunting and fishing spots.

Rollerdome Fun Plex

1230 Skyline Dr., Hopkinsville / 270-885-3663
Open to the public Thursday-Sunday; call for times

Indian Hills Bowling Alley

3001 Canton Pike., Hopkinsville / 270-885-3936
Open daily; open bowling times may vary

Public Parks



Hopkinsville maintains more than 112 acres in both recreation complexes and small community parks. Features vary at all parks and may include walking trails, playground equipment, tennis courts, soccer fields and more. Visit www.hoptownrec.com for a complete facility listing.

Trail of Tears Commemorative Park

Skyline Dr. & Hwy 41 / 800-842-9959 / www.trailoftears.org

Situated on a portion of the campground used by the Cherokee Indians on the infamous Trail of Tears, this portion includes the grave sites of Chiefs White Path and Fly Smith. Also on the site is a restored log cabin, Heritage Center and picnic areas. A Trail of Tears Pow Wow is held annually the weekend following Labor Day with native dance competitions, crafts, food and more.

Pennyroyal Area Museum



217 E. 9th Street / Hopkinsville, KY 42240 / 270-887-4270
Open M-F 8:30a.m.-4:30p.m.; Sat 10a.m.-3p.m. Admission: \$5

This former Post Office, constructed in 1914, is now home to the Pennyroyal Area Museum, where the colorful past of southwestern Kentucky comes alive. See the Night Riders light up the sky during the tobacco war, clairvoyant Edgar Cayce perform his miracles, historic clothing, antique toys and local memorabilia from bygone years. Rotating exhibits by local artists are also on display.

The Woody Winfree Fire-Transportation Museum, located across the street, opened in 2008. This portion of the Museum includes fire trucks, automobiles, wagons, buggies, a sleigh, benches from Hopkinsville's railroad station, historic photos from the fire department and a large collection of Christian County license plates. One of the Museum's most intriguing artifacts is the entire collection of recorded fire calls through the time written records were kept.

Beverly Academy

Beverly, KY 42240 / 270-887-4270

This one-room school house attended by world-renowned psychic Edgar Cayce, was constructed in 1889 and restored in 1999. The Pennyroyal Area Museum provides educational programs, including classroom studies and playground activities as they were a century ago.



Historic Downtown



Fort Campbell Memorial Park



Lone Oak House Museum



War Memorial Walking Trail

Historic Downtown



Renaissance-Main Street / 270-498-5180

Look up to enjoy intricate detailed historic architecture while strolling among local shopping boutiques in historic downtown Hopkinsville. Wares include ladies clothing and accessories, home decor and accessories, antiques, books, skin and hair care, fine jewelry, hardware and more. With dining options, live theatre, art exhibits, museums, parks, and a seasonal Farmer's Market, there's much to enjoy in historic downtown Hopkinsville.

Fort Campbell Memorial Park

41-A & Pennyriple Parkway / (270) 887-4290 or 1-800-909-9016

<http://hoptownrec.net/facilities/parks/gander-memorial-park>

The 16-acre Fort Campbell Memorial Park honors 248 soldiers who were killed in 1985 while returning home to Fort Campbell. The park features a paved walking trail, benches and lighted "Peacekeeper" monument sculpted by Hopkinsville artist Steve Shields.

Jefferson Davis Monument

Hwy 68E, Fairview, KY 42221 / 270-889-6100

Gift Shop is open May 1-Oct 31, 9a.m.-5p.m.

The Jefferson Davis Monument State Historic Site is a memorial to the Confederate president born on the site in 1808. The 351-foot concrete obelisk rests on a foundation of Kentucky limestone and contains walls seven feet thick at the base, tapering to two feet thick at the incline. The site includes a Visitor's Center with gift shop, picnic shelters and a playground.

Round Table Literary Park

720 North Drive

Nestled among a grove of trees on the Hopkinsville Community College campus, the park features King Arthur's Sword in the Stone, a 22,000 pound replica of King Arthur's Round Table, the Muse of Tragedy, a Greco-Roman amphitheater, a Medieval Wall, the Delphain Tholos and melpomene.

Don F. Pratt Memorial Museum

Tennessee Avenue, Building 5702 / Fort Campbell / 270-798-4986

Open Daily, except Christmas and New Years, 9:00a.m.-4:30p.m. Free Admission

Located within Fort Campbell at the Kentucky/Tennessee border, this museum traces the history of the famed 101st Airborne Division "Screaming Eagles" from World War II engagements to Vietnam to Operation Desert Storm. Various aircraft, military equipment and monuments are on display.

Lone Oak House Museum



317 East 16th St. / 270-707-7026

Open by appointment

One of the oldest and most unique homes in Hopkinsville, Lone Oak opened in June 2008 as the city's first house museum. Built in 1834-35, Lone Oak architecture represents the transition between the Federal and Greek Revival period. It is one of only two documented examples of a "Temple Form" house in Hopkinsville that was later altered with the addition of two upstairs front rooms in the 1880's.

War Memorial Walking Trail

101 Walter Garrett Lane / Oak Grove / 270-439-5675

Located in Oak Grove just off I-24 at Exit 86, this mile-long trail features markers honoring all U.S. wars and conflicts. Special monuments are on site for Vietnam War Veterans. Stroll along the well-lit trail featuring plants natural to this area. On site are a picnic pavilion, playground, and the newly opened Viceroy Performing Arts Center.



Considered by many to be the greatest psychic of the 20th Century, Edgar Cayce was born on March 18, 1877 in Hopkinsville and died on January 3, 1945 in Virginia Beach, Virginia. He is buried in Riverside Cemetery in Hopkinsville.

From 1901, when he was 24, until his death, he gave over 14,000 ‘readings,’ many of which were transcribed by a stenographer and are available for research. A “reading” was a discourse given by Mr.

Cayce while he was lying down with his eyes closed and in an altered state of consciousness. Delivered in his own normal voice with only a few exceptions, the discourses he gave were recorded stenographically and later typed. They cover such a wide array of subject matter that they are indexed under more than 10,000 major subject headings, with more than 225,000 index cards.

Most of the readings were given for individuals and, therefore, deal with specific personal questions concerning various aspects of physical, mental, spiritual, vocational and interpersonal life. Some of these readings, however, were complete discourses on topics such as meditation, Bible interpretation, and world affairs. It was not necessary for the person obtaining the reading to be present: Mr. Cayce was able to describe individuals and diagnose their physical condition with surprising accuracy, even though they might have been hundreds of miles away. From these readings, thousands of people reported being helped, often in ways which transformed their lives. Studied as a

whole, the readings provide specific procedures which many consider helpful in treating many illnesses. And now, decades after Mr. Cayce’s death, his readings continue to inspire, educate and amaze those who research them.



Cayce’s first home in Hopkinsville is located at 705 W. Seventh Street. His family moved here from the country in 1893.



- 1 **1723 E. Seventh St.** Cayce lived here briefly.
- 2 **530 W. Seventh St.** Cayce lived here as a child in the late 1890s.
- 3 **705 W. Seventh St.** Cayce’s family moved into this house in 1893.
- 4 **1910 S. Main St.** Cayce’s last home in Hopkinsville, where his family lived until 1912.
- 5 **Dalton Building, Seventh & Virginia** Dr. Wesley Ketchum’s office, where Cayce gave several readings between 1905-12.
- 6 **Beverly Academy** Cayce attended school here from 1889-93.
- 7 **1931 E. Seventh St.** Cayce lived here briefly.
- 8 **Riverside Cemetary** Cayce’s burial site.



The Bell House, located at 530 West Seventh Street, was occupied by Edgar Cayce, his sisters, and parents in the late 1890s.



The Arnold Cottage, located at 1910 South Main Street, was the last home occupied by Edgar Cayce while living in Hopkinsville. The family lived here until 1912.



Alhambra Theatre



Brushy Fork Creek Studio & Gallery



Bravard Vineyard & Winery



Jeffers Bend

Alhambra Theatre



507 South Main Street / 270-887-4023 / www.pennyroyalarts.org

After a major renovation, the Alhambra Theatre reopened in 2008. Audiences in the 780-seat proscenium theatre enjoy the expansions, comfort, and restored molding that is patterned after the original 1928 styling. An annual *Live at the Alhambra* series offers a variety of shows and musical performances.

L & N Depot



425 E. 9th Street / 270-887-4295 / www.pennyroyalarts.org

Open: Monday-Friday, 9-4

Built in 1892, the L & N Depot is on the National Register of Historic Places and now houses the Pennyroyal Arts Council. During its operating years, the depot was a popular layover spot for those traveling by train. The Hopkinsville Art Guild coordinates monthly exhibits at the Depot by a variety of local artists.

Brushy Fork Creek Studio & Gallery

1550 Pleasant Green Hill / Crofton / www.brushyforkcreek.com

Call for hours.

Brushy Fork Creek Studio & Gallery owners Paul and Patricia Ferrell, create and display their various works of art including woodturnings from hollow-form vessels, bowls, oil lamps, decorative wooden wine tops, and ikebanas made mostly from burlwood and spalted wood from Western Kentucky. They also produce a variety of unique functional stoneware pottery and a distinctive line of woodfired pots.

Nightlife



A number of venues in Hopkinsville offer live music, food, drink and fun on weekend evenings. For a complete list, visit the Entertainment section at www.visithopkinsville.com.

Jeffers Bend Environmental Center

Metcalfe Lane & Hwy 41 North / www.jeffersbend.org/

Call for hours.

This converted water treatment facility offers nature trails, a windmill-aerated lake, bird observatory, amphitheatre, welcome center and environmental classrooms.

Bravard Vineyards & Winery

15000 Overton Road / 270-269-2583

Open Saturday by appointment.

Bravard Vineyards & Winery is a small family-owned winery located in the pleasant rolling hills of western Kentucky 17 miles northeast of downtown Hopkinsville. Established in 1992, the winery offers free tastings, vineyard tours and October harvest celebrations.

Amazing Acres

3445 Deason Road / 270-881-2445

Open by appointment only.

Amazing Acres has been a burley and dark fired tobacco farm since 1978. They offer heritage activities that kids of all ages enjoy and learn from. At various times of year, the farm offers sessions and events such as sewing on a treadle sewing machine, churning butter, hayrides, studying bee hives, and making scarecrows.

Bramble & Bee

15275 Meacham Rd. / 270-269-6006

Call for hours.

What began with three beehives in a backyard has blossomed into a thriving honey farm. The farm offers multiple honey products year-round, plus an array of honey-based products such as soaps, lotions, and lip balm.



Fairview Produce Market



Christian Way Farms



KY Veterans Cemetery



dot's American Restaurant

Christian Way Farms

19590 Linville Road / 270-269-2434 / www.christianwayfarm.com
See website for scheduled activities and tours.

Christian Way Farm opened in 1998 to teach and provide a true farm experience. They offer outings that teach children about farming as it relates to their current curriculum requirements, and provide teachers with supplemental materials.

Copper Canyon

14750 Ovil Rd. / 270-269-2416
Call for appointment and rates.

Ride horseback through the scenic backwoods of Christian County and the Copper Canyon's recreated 1800's mining town. Historic replicated buildings include the Copper Canyon Bank, Maude Gowdy's General Store, Red Dog Saloon, Marshall's Office & Jail, and many more.

Fairview Produce Market

10292 U.S. Hwy 68 / Pembroke / 270-887-0053
Opens at 10:00a.m. Mon-Tues, Thurs-Fri; April-October

Formed in 1997 by local farmers in the community, buyers come from surrounding towns and cities and throughout the Midwest to purchase locally grown produce.

Hosta Haven

1710 Long Pond Rd., Pembroke / 270-885-4000 / www.hesenergy.net/scotrust

The folks at Hosta Haven enjoy having folks come by for a tranquil stroll in the woods to share ideas about plants and landscaping.

Lovell's Lacy Orchard

22850 Coal Creek Rd. / 270-269-2242
Labor Day Weekend-Thanksgiving; Mon-Sat 8-5; Sun 12-5

Pick-your-own apples and peaches from 5,000 trees during harvest season.

Kentucky Veterans Cemetary-West

5817 Fort Campbell Blvd. / 270-889-6106

A 25-foot eagle and a 65-foot pole for the American flag mark the entrance to the Kentucky Veterans Cemetary-West. On grave sites marked with white crosses, Veterans of all wars and ranks are buried side by side. A computer terminal in a brick entry building with a heated foyer helps visitors find the graves or stored ashes of loved ones.

McCarroll Geneology Room

9th & Bethel St. / 270-887-4262
Open Mon-Sat

Located inside the Public Library, this resource provides a wealth of research materials for tracing the heritage of people whose lives touched Christian County.

Shopping & Dining



Gift shops and locally-owned boutiques and antique shops are sprinkled throughout the community. Here, shoppers can find one-of-a-kind gifts and crafts that help make your visit memorable. Bradford Square Mall also offers two department store anchors along with other nationally-known shops.

More than 100 restaurants and eateries offer dining choices galore. From 1950s era burgers to the best steaks around to family style dining, Hopkinsville-Christian County offers the options you crave. A few local favorites include:

Dot's American Restaurant
125 Turtle Creek Dr. / 270-881-6065
Down-home southern American fare.

Horseshoe Steak House
2112 Ft. Campbell Blvd. / 270-886-7734
Well-known throughout the region for the finest steaks around.

Ferrell's Snappy Service
1001 S. Main Street / 270-886-1445
The best burgers in Western Kentucky.

Woodshed Pit Bar-B-Que & Restaurant
1821 W 7th St. / 270-885-8144
Tasty pork, catfish, primerib and fried pies.



Robert Penn Warren
Birthplace Museum



Land Between the Lakes

Land Between the Lakes

100 Van Morgan Drive, Golden Pond / 270-924-2000
www.lbl.org

A 30-minute drive west of Hopkinsville, more than 170,000 acres and 300 miles of undeveloped shoreline comprise Land Between the Lakes National Recreation Area, the largest island peninsula in the U.S. With some 200 miles of hiking and biking trails, 985 campsites, five lake access areas and numerous educational venues, LBL is a haven for outdoor adventure.

Guthrie Railroad Museum

3rd & Kendall Streets / Guthrie / 270-483-2683
Open by appointment.

This renovated caboose contains historic railroad displays from the L&N railroad.

Robert Penn Warren Birthplace Museum

3rd & Cherry Street / Guthrie / 270-483-2683
www.robertpennwarren.com/birthpla.htm
Open Tues-Sat 11:30a.m.-3:30p.m.; Sunday: 2p.m.-4p.m.

The birthplace of the nation's first poet laureate and three-time Pulitzer Prize winner, this museum is complete with period furnishings reflecting Warren's turn-of-the-century childhood with exhibits on his life and works.

Visit Hopkinsville on
Facebook and **MySpace.**

See our *Come Home to Kentucky*
DVD on **YouTube.**

Twenty historic markers are located in Christian County. For marker descriptions, visit <http://history.ky.gov>.

Bethel College 15th Street, Hopkinsville	#1269
Charles S. Moorehead, 1802-1868 W. 13th Street, Hopkinsville	#1910
Church Hill Grange House Church Hill, 5 miles south of Hopkinsville	#1179
County Named, 1797 Courthouse Lawn, Main Street, Hopkinsville	#1224
Courthouse Burned Courthouse Lawn, Main Street, Hopkinsville	#577
Famous Prophet (Edgar Cayce) 530 N. Main St., Riverside Cemetery, Hopkinsville	#1313
First Presbyterian 9th & Liberty Streets, Hopkinsville	#1045
Forrest Reconnoitered Hopkinsville Stone Co.	#618
Genoa 5 mi. S. of Hopkinsville, KY 108	#851
Grace Episcopal Church Liberty & 6th Streets, Hopkinsville	#1690
Hdqrs. CSA Commander 530 N. Main St., Riverside Cemetery, Hopkinsville	#880
Hotel Latham 7th & Virginia Streets, Hopkinsville	#1501
Lewis & Clark in Kentucky Main & Court Streets, Hopkinsville	#2190
No-Tillage Farming 5 mi. S. of Herndon, KY 107	#1759
Peace Park 10th & Campbell Streets, Hopkinsville	#1041
Pioneer Graveyard 301 W. 13th St., Hopkinsville	#1268
The Trail of Tears E. 9th St. at Little River, Hopkinsville	#1042
U.S. Vice President Herndon	#740
Union General's Grave 530 N. Main St., Riverside Cemetery, Hopkinsville	#882
Universalist Church 14 mi. NW of Hopkinsville, KY 109	#1625



James E. Bruce Convention Center



Pennyrile Forest State Resort Park Lodge

Whether you're choosing an upscale conference designed to impress or a getaway retreat with time to unwind, Hopkinsville-Christian County offers an array of venues conducive for all types of meetings and events.

James E. Bruce Convention Center

303 Conference Center Drive, Hopkinsville / 270-707-7000
877-452-3836 / www.bruceconventioncenter.com

- 4,000 Sq. Ft. Lobby
- 20,430 Unobstructed, Divisible Exhibition Space
- Total Facility Seating: 2,500 Reception Style
- 7,230 Total Meeting Space in 7 Breakout Rooms

Holiday Inn

2910 Ft. Campbell Blvd. Hopkinsville / 270-886-4413
877-836-4780 / www.holiday-inn.com/hopkinsville

- 4 Meeting Rooms
- 11,200 Total Meeting Space
- Largest Room Capacity: 500 Reception Style
- 3,000 Sq. Ft. of Exhibit Space
- 101 Guest Rooms

Pennyrile Forest State Resort Park

20781 Pennyrile Lodge Road, Springs / 270-797-3421
800-325-1711 / <http://parks.ky.gov/findparks/resortparks/pf>

- 2 Meeting Rooms Totaling 2,519 Sq. Ft.
- Total Seating for 120
- Private Dining Room with Lake View; Seating for 80
- 24 Lodge Rooms; 12 Cottages; 68-Site Campground

Best Western

4101 Harvey Way, Hopkinsville / 270-886-9000
www.bestwesternkentucky.com

- Largest Meeting Space: 75 People
- 107 Guest Rooms

Comfort Suites

210 Harvey Way, Hopkinsville
270-985-1101 / 800-426-2121
www.comfortsuites.com

- 702 Sq. Ft. Meeting Space
- 73 Guest Rooms

Fairfield Inn

345 Griffin Bell Rd., Hopkinsville
270-866-5151 / 800-53-5967 / www.fairfieldinn.com

- 635 Sq. Ft. Meeting Room
- 61 Guest Rooms



Four Seasons Catering at Oakland Manor

9210 Newstead Road, Hopkinsville / 270-881-4040

- Detached Meeting Facility Seats 100
- Full Custom Catering Services

Hampton Inn & Suites

210 Richard Mills Rd., Hopkinsville / 270-786-8800 / www.hamptoninn.com

- 720 Sq. Ft. Meeting Room
- 71 Guest Rooms

Miles from Other Cities

Albany, KY	184	Louisville, KY	170
Bardstown, KY	151	Lexington, KY	208
Bowling Green, KY	65	London, KY	210
Corbin, KY	226	Madisonville, KY	38
Covington, KY	265	Mayfield, KY	85
Danville, KY	193	Murray, KY	58
Elizabethtown, KY	127	Owensboro, KY	82
Frankfort, KY	204	Paducah, KY	76
Glasgow, KY	101	Pikeville, KY	351
Harrodsburg, KY	200	Richmond, KY	240
Henderson, KY	73	Somerset, KY	178
Atlanta, GA	314	Evansville, IN	82
Chicago, IL	447	Indianapolis, IN	283
Cincinnati, OH	268	Nashville, TN	69
Detroit, MI	528	St. Louis, MO	247



Little River Days Festival



Intertribal Pow Wow



Western KY State Fair Pageant

January (2010)

Ebony Fashion Show

Hopkinsville Community College Auditorium
270-885-9096

Hopkinsville Modernettes sponsor this event in 2010. After a half century of showcasing elegance, glamour and breathtaking style, this show still wears the title of "the world's largest traveling fashion show."

March



Edgar Cayce Seminar

Pennyroyal Area Museum / 217 E. 9th St. / 270-887-4270

The followers of clairvoyant and psychic Edgar Cayce gather to read and discuss his discourses and tour local sites.

May



Little River Days

May 15-16 / Downtown Hopkinsville / 270-887-4290 / 800-909-9016

Arts & crafts, one stage of entertainment, road races, children's activities, food, and much more. The 2009 festival will be bigger and better than ever.

Little River Bicycle Race

Throughout Hopkinsville / 270-887-4290

Ten, 30, 60 and 100-mile rides for bikers at all levels.

June

Rodeo

Western Kentucky Fairgrounds / 270-424-5924

The Christian County Cattleman's Association annual rodeo features championship rodeo cowboys and girls in calf roping, barrel racing, bronc and bull riding and much more.

68-80 Yard Sale

June 5-7 / www.400mile.com / 800-842-9959

This 400-mile, four-day event stretches across the state of Kentucky and features arts and crafts, antiques and collectibles, as well as many local community festivities.

July

Western Kentucky State Fair

Western Kentucky Fairgrounds / 270-424-5924 / www.westernkystatefair.com

This week-long fair features arts and crafts, beauty pageants, concerts, truck and tractor pulls, demolition derby, harness racing, rides, and games.

September

Intertribal Pow Wow

September 5-6 / Trail of Tears Commemorative Park
270-886-8033 / www.trailoftears.org

This event features Native American dance, competition, story-telling, music, cooking, and arts and crafts with Native Americans in full regalia.



Hopkinsville Salutes Fort Campbell Week

Throughout Hopkinsville / 800-842-9959
www.hopkinsvillechamber.com

This week-long celebration honors the soldiers at Fort Campbell with festivities throughout the community. Events include a formal ball, tour of homes, golf scramble, fashion show and chili cook-off competition.

NatureFest

Jeffers Bend Environmental and Botanical Gardens
270-885-8692, ext. 123

Experience a full day of fun with trail walks, animal exhibits, birding activities, canoe rides, recycling events, food, prizes and more.



2008 Veterans' Day Parade



Harvest Celebration



Fort Campbell Memorial Park



Icicles along Fort Campbell Blvd.

Night Rider Tour

217 E. 9th Street / 270-887-4270

This open-air hayride tour through downtown is a reenactment of the 1907 Night Rider Tobacco Raid in Hopkinsville.

October

Harvest Celebration

Bravard Vineyards & Winery / 1500 Overton Road / 270-269-2583

Live bluegrass bands with dancing, picnicking, and poetry reading, this fall celebration offers a variety of events for every age.

Harvest Praise

Christian Way Farm / 19590 Linville Rd. / 270-269-2434

This special day of food, activities, and Christian music will be fun for the entire family.

Haunted Ghost Town

Cooper Canyon Ranch / Fearsville / 270-269-2416

Board the wagon and allow your imagination to take control. With strong mind control and a bit of antidote, you may return safely from your journey.

November

Veterans' Parade

Downtown Hopkinsville / 800-909-9016

Support our troops at this annual parade featuring music, displays, refreshments and fellowship.



December



Christmas Parade

Downtown Hopkinsville / 800-909-9016

This annual parade ushers in the Christmas holiday season with floats, marching bands and a visit from Santa.

Quick Facts

Population:

Hopkinsville	35,899
Christian County	80,686

Climate:

Average Annual Temperature	57.1 °
Average Precipitation	50.9"

Location:

Hopkinsville-Christian County, Kentucky is located one hour north of Nashville, Tennessee with easy access from Interstate 24 and the Pennyriple Parkway. The community is the proud home of Fort Campbell and the Army's 101st Airborne Division (Air Assault.)



LODGING & ATTRACTIONS MAP

Lodging

E3	American Inn US 41 North 270-885-8401 34 Rooms	E6	King's Court Motel 2309 Ft. Campbell Blvd. 270-886-1529 22 Rooms
E7	Best Western 4101 Ft. Campbell Blvd. 270-886-9000 107 Rooms	E4	Little River Motel 131 N. Main 270-885-5484 12 Rooms
E3	Chicagoan Motel 1013 N. Main 270-886-5137 15 Rooms	E5	Manhattan Motel 307 S. Main 270-886-6628 15 Rooms
E4	Colonial Motel 320 N. Main 270-886-5137 19 Rooms	E4	Motel 7 804 N. Main (41-North) 270-885-3934
E7	Comfort Suites 210 Harvey Way 270-985-5484 73 Rooms	B1	Pennyrile Forest State Resort Park Lodge 20781 Pennyrile Lodge Rd. (US 109) 270-797-3421 24 Rooms; 13 Cottages
E7	Fairfield Inn 345 Griffin Bell Drive 270-886-5151 61 Rooms	E7	Rodeway Inn 2923 Ft. Campbell Blvd. 270-885-1126 58 Rooms
E7	Hampton Inn & Suites 210 Richard Mills Dr. 270-886-8800 71 Rooms	E5	Travel Inn 1210 E. 9th St. 270-886-8191 24 Rooms
E6	Holiday Inn 2910 Ft. Campbell Blvd. 270-886-4413 101 Rooms	F6	Welcome Inn 2916 Ft. Campbell Blvd. 270-886-5242 127 Rooms

Golf Courses

B1	Pennyrile Forest State Resort Park Golf Course 270-797-7888	E9	Novadell Golf Course 270-886-1101
G5	Western Hills Golf Course 270-885-6023	E9	Cole Park Golf Course 270-431-6240

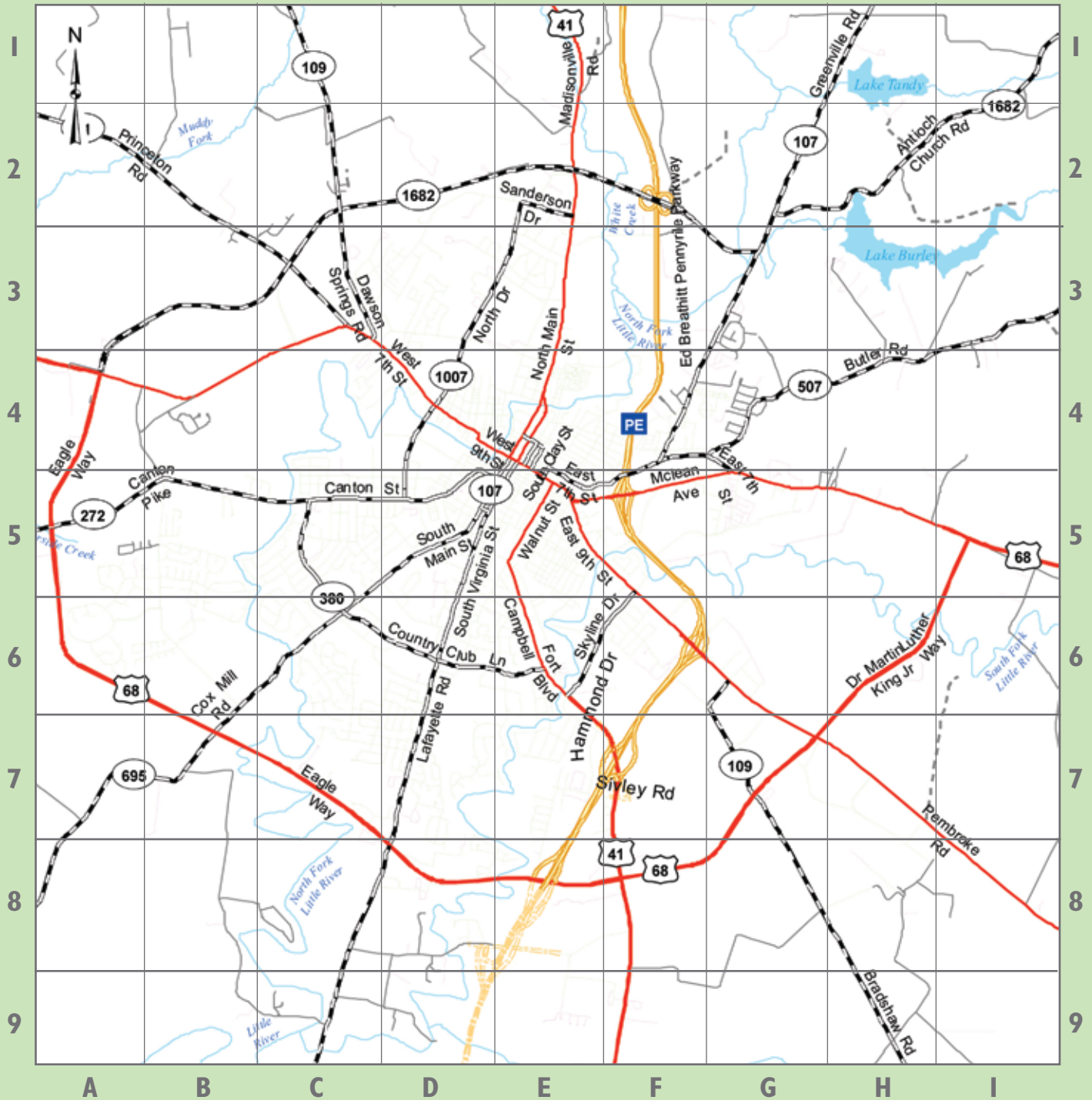
City Parks

D5	East 18th Street Park
E5	Joe Mumford Park
D4	Little River Park
D4	North Drive Center
D4	North Drive Complex & Community Playground
E4	Peace Park
D3	Ruff Park/Herb Hays Pavilion
E4	Second Street Park
E8	Tie Breaker Park
E4	Virginia Park
E5	Walnut Street Center
D5	West 18th Street Park

Sites of Interest

E4	Pennyroyal Area Museum
F5	Trail of Tears Commemorative Park
F7	Fort Campbell Memorial Park
E9	Don F. Pratt Memorial Museum
E3	Round Table Park
E3	Hopkinsville Community College
C5	Western KY State Fairgrounds
F6	Bradford Square Mall
E6	Visitor's Center
E8	James E. Bruce Convention Center
E8	Tie Breaker Aquatic Center
E8	Stadium of Champions
D4	Downtown Farmers Market
E4	Alhambra Theatre
F5	Pennyroyal Scuba Center
H2	Bravard Vineyards & Winery
E4	Jeffers Bend Environmental Center & Botanical Garden
E4	L&N Depot
F9	KY Veterans Cemetary-West
I5	Jefferson Davis Monument

LODGING & ATTRACTIONS MAP



8 Remarkable

Facts about Hopkinsville-Christian County

KENTUCKY

- 1 Breathtaking event and recreation venues that outshine those in most any other city our size.**
From the James E. Bruce Convention Center to Pennyrile Forest State Resort Park, our community shines with amenities that many larger cities envy.
- 2 Within an hour's drive of five large metropolitan areas...and a National Recreation Area.**
Close proximity to Nashville, Owensboro, Paducah, Evansville, Clarksville and Land Between the Lakes further extends our options for entertainment, recreation, shopping and dining.
- 3 A high-value real estate market.**
The local metropolitan area remains one of the few places in America where you can buy a new 2,000 square foot house for under \$200,000...with acreage!
- 4 Beautifully ornate and well-preserved architecture in an emerging downtown.**
An abundance of structures built from the 1830s through the early 1900s makes Hopkinsville's rooflines a treasure to behold.
- 5 Six years younger than the average Kentuckian.**
With a median age under 30, Christian County residents are young, progressive and eager to be engaged.
- 6 Pride in small town connections.**
Residents value the sense of community formed by connectedness and strong relationships. It's a place where people really do matter.
- 7 Diverse, forward-thinking and growing.**
Hopkinsville-Christian County plans its future with proactive and inclusive initiatives in education, infrastructure, beautification, workforce development and downtown revitalization.
- 8 A place to make your mark.**
Because people matter...because we are growing...because meaningful community initiatives are now top priorities, Hopkinsville-Christian County is place where anyone can get involved and shape the future. So come, make your mark!

The Hopkinsville-Christian County Visitor Guide is published by the
Hopkinsville-Christian County Convention & Visitors Bureau
2800 Fort Campbell Blvd. | Hopkinsville, KY 42240
800-842-9959 | www.visithopkinsville.com



HOPKINSVILLE
CHRISTIAN COUNTY
CONVENTION & VISITOR'S BUREAU

Make your mark.

Printed in cooperation with the Kentucky
Department of Tourism.





HOPKINSVILLE

CHRISTIAN COUNTY
CONVENTION & VISITOR'S BUREAU

2800 Fort Campbell Blvd. | Hopkinsville KY 42240

www.visithopkinsville.com